

# Milesight



## INTELLIGENT TRAFFIC CAMERA SERIES

Go Beyond Security, Go for Smarter Traffic

SMART BUILDING  
LoRaWAN® AI  
NDAAI VCA  
Video Surveillance  
5G Intelligent Traffic  
LoRaWAN®  
Video Surveillance NDAAI  
AIoT Video  
SMART BUILDING  
MILESIGHT D2D  
Video Surveillance AI IoT  
Multi-dimensional Sensing  
NDAAI INTELLIGENT TRAFFIC  
Video Surveillance LoRaWAN®  
Video Surveillance  
SMART BUILDING  
MILESIGHT D2D  
AI VCA  
5G

V3.1



Milesight | [www.milesight.com](http://www.milesight.com)

Tel: +86-592-5922772(8801) - Sales +86-592-5922772(8701) - Support

Mail: [sales@milesight.com](mailto:sales@milesight.com) [support@milesight.com](mailto:support@milesight.com)

Address: Building C09, Software Park Phase III, Xiamen 361024, Fujian, China



[www.milesight.com](http://www.milesight.com)



# Go Beyond Security, Go for Smarter Traffic.

The rising of road-related issues, such as traffic congestion, parking problems, and road accidents, poses serious challenges to global traffic management agencies and places higher demands on traffic monitoring systems.

Milesight Intelligent Traffic Solution combines video surveillance with AI, ANPR, 3D Radar, and other cutting-edge technologies help to alleviate these concerns. It helps traffic management agencies systematically and intelligently monitor and understand road users' behavior and gain valuable insights based on real-time data to optimize traffic flow, minimize accident risks, reduce congestion, and respond to emergencies more efficiently, which significantly optimizes traffic management and makes transport safer and smoother.

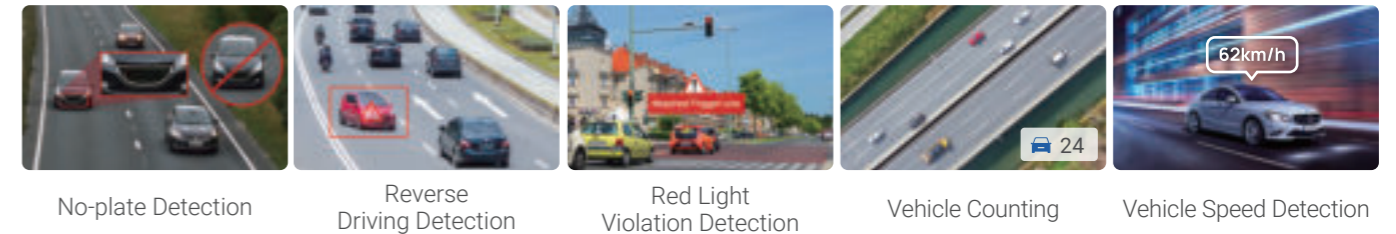


## Key Features of Milesight Intelligent Traffic

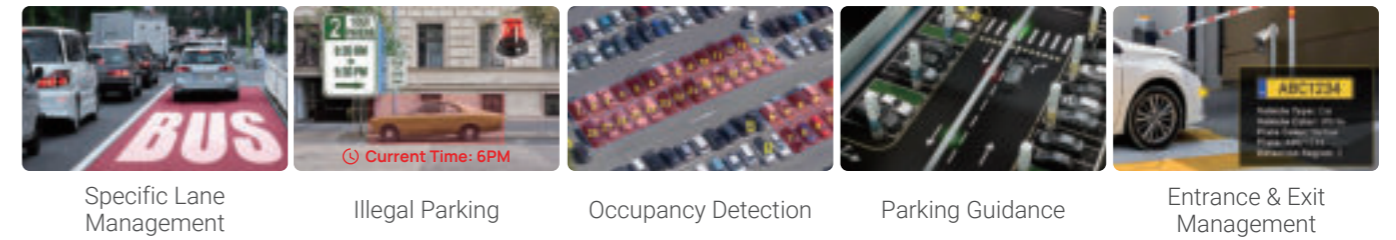
Stunning High Performance to Satisfy All Your Needs

### Various Detection Mode, Versatile Application Scenarios

#### Road Traffic Enforcement



#### Parking Management



Precise Capture, Superior Image



Flexible Deployment



AI-empowered LPR



Broad Region and Country Support



Integrated 3D Radar



Versatile Interfaces



Plate Management & Smart Search



Extensive Interoperability





# Road Traffic Management

Intelligent Cameras for Road Traffic Monitoring

## Capture Fast-moving Vehicle with Great Details

It's always the top concern to capture plates of speedy vehicles in traffic monitoring. Mileight Intelligent Traffic cameras adopt Global Shutter and supplement light and feature 100fps ultra-high frame rate with advanced image processing algorithms to capture all clear details of fast-moving vehicles during the day and night.

- Global Shutter
- 100fps High Frame Rate



- Traditional LPR Algorithms**  
High rate of false positives
- Mileight AI LPR Algorithms**  
Focus on plates precisely

## No More Misreads and False Positives with Advanced AI Algorithms

Based on AI deep learning neural networks, our embedded AI LPR algorithms allow the camera to detect plates and read characters precisely, and also reducing false positives (bumper stickers, decals, etc.) and dealing better with smudges, plate variation, lighting changes or different angles than traditional LPR algorithms.

- LPR Image Mode
- Mileight AI LPR Algorithms

## Get Clearer Plate Images at Night for 24/7 Monitoring

Poor lighting can be another major challenge in road traffic monitoring. However, that won't be an issue for us. Mileight adopts supplement light and develops a dedicated LPR Image Mode and a Night Mode to enhance the performance of 24/7 traffic monitoring through both hardware and software.

- Supplement Light
- Night Mode
- 1/1.8" Starlight Sensor

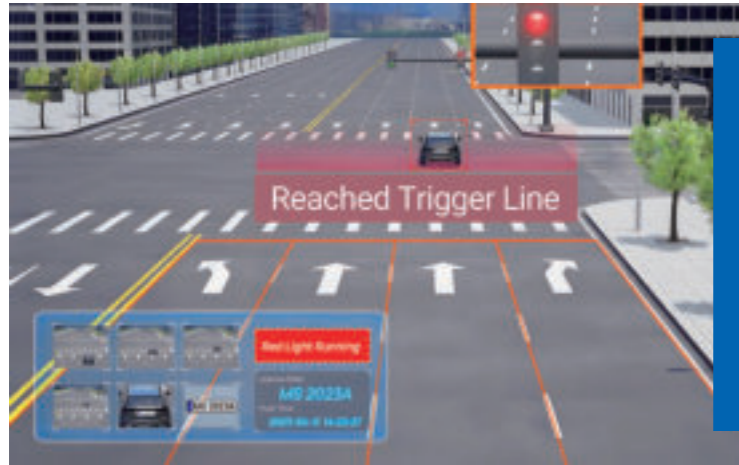


## More Features

- Evidence Camera Linkage
- Vehicle Counting
- No-plate Detection
- Reverse Driving Detection
- Prevention of Certain Vehicle Types

# TrafficX Camera Series

ANPR Game-Changer - For More Demanding Traffic Applications



## Red Light Violation Detection

Utilizing the power of AI deep learning and signal inputs, Milesight TrafficX Enforcement Camera accurately detects traffic light status and vehicles that run red lights, greatly boosting law enforcement effectiveness and making the roads safer.

### • Capture Traffic Data Like Never Before •

**99%**

Capture Rate

**98%**

Plate Recognition Rate

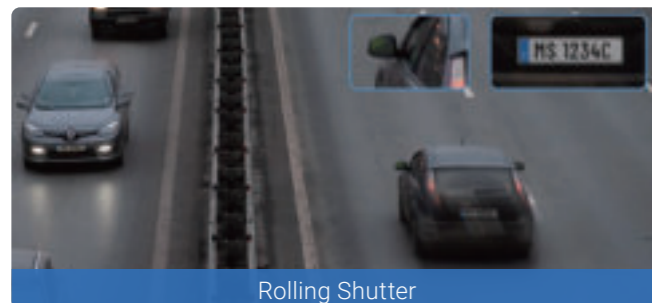
**250**km/h

High Recognizable Speed

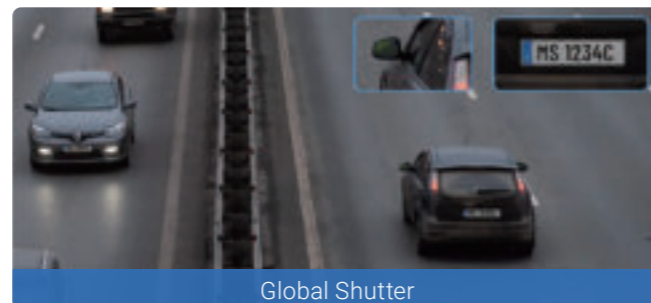
Experience the cutting-edge with our TrafficX Enforcement Camera - powered by a High-performance AI Chip and revolutionary Frame Parity Flashing alongside Global Shutter technologies. This innovative combination ensures you capture every critical moment on the road with absolute precision.

## Crystal Clear Details from Global Shutter

Seize every moment in pristine clarity! With global shutter technology, all pixels are exposed simultaneously, allowing for the accurate capture of fast-moving vehicles, eliminating motion blur, distortions and providing crystal-clear images for accurate analysis.



Rolling Shutter



Global Shutter

## Double Vision, Double Power

Get a comprehensive view of traffic with the dual-lens setup. Simultaneously capture an overview of the scene and detailed ANPR image. It's like having two cameras in one, efficiently providing you with valuable evidential data for precise analysis.



## Onboard AI-based ANPR, Beyond Plates

Say hello to hassle-free traffic monitoring! With AI-based ANPR on the edge, our TrafficX Enforcement Camera achieves unmatched accuracy in identifying vehicles. Identify license plates, plate colors, vehicle types, brands, colors - all effortlessly.

### • More Highlights •



Optional 4G LTE & Built-in GPS Empower Smart Mobility



Support CGI/APIs and TCP/HTTP /MQTT Protocols for Easy Integration

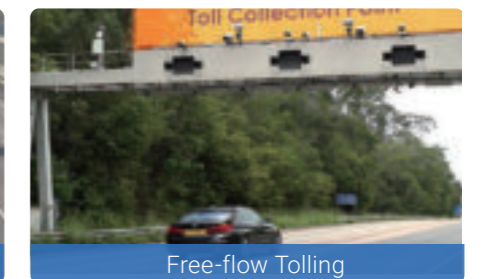
## Various Applications



Urban Road



Freeway



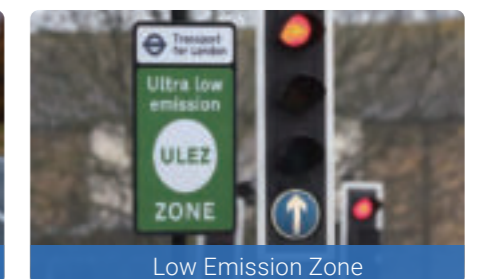
Free-flow Tolling



Traffic Monitoring



Law Enforcement



Low Emission Zone

## 4G Solar-powered Traffic Sensing Camera

Real-time Evidence Catcher - Easily Deploy, Sharply Detect



- Accurate Evidence Capture by Radar & AI
- Solar-powered & Low Consumption
- 4G Wireless Easy Deployment to Go Anywhere
- MQTT & HTTP Supported, High Compatibility
- NDAA Compliant

### Suitable in Various Scenarios



Illegal Dumping Detection



Suspicious Vehicle Detection



Specific Lane Management



Illegal Parking Detection

## AI Road Traffic Radar Pro Bullet Plus Camera

Integrate 3D Radar, AI, and LPR into One



### Accurate and Precise Data with Advanced 3D Radar Technology



Integrate 3D Radar, AI, and LPR into one camera. Accurately identify vehicles and read plates, and provides precise real-time data on vehicle speed and direction in any weather conditions.

#### • 3D Radar Localization

- Up to 90m Detection Distance
- Up to 200km/h Speed Capture
- More than 95% High Recognition Accuracy
- 2 Lanes Coverage
- Up to 32 Vehicles Detected

- Vehicle Speed Detection
- Traffic Violation Detection
- Traffic Flow Statistics
- Evidence Camera Linkage
- LPR Smart Search
- Intelligent AI-powered LPR Algorithm
- Third-party VMS Integration

## AI Road Traffic PTZ Bullet / Bullet Plus Camera

Intelligent PTZ to See More for Traffic Solution



Tilt Range: -45°~30° Pan Range: 0~360°

Flexible 360° Pan, 75° Tilt, and Zoom Tasks

5.3~64mm, 5X/12X/20X/23X Optical Zoom Integrated Junction Box

Smart Fan for Defogging

Easy Deployment and Compact Structure

Traffic Violation Detection

Auto Tracking

- Traffic Flow Statistics**  
Live view vehicle counting result & useful report insights
- Evidence Camera Linkage**  
Link with any regular cameras to capture the evidence
- 3D Positioning**  
Easily control and adjust the camera with just a mouse
- Plate Data Management**  
Manage plate data effectively with Milesight Back-end integration
- Intelligent AI LPR**  
Recognize various vehicle features with embedded AI LPR Algorithm
- Intelligent White LED**  
Use the White LED as a supplementary light source or warning signal at night.
- LPR Smart Search**  
Locate videos quickly by searching target vehicle's features
- Third-party VMS Integration**  
CGI/API/TCP/HTTP supported to integrate with third-party VMS or platforms
- SIP/VoIP Supported**  
SIP/VoIP and video streaming supported for mobile phones and video phones

### ► Other Recommended Models

- AI Road Traffic Pro Bullet Plus Camera
- AI Road Traffic Speed Dome Camera
- AI Road Traffic Supplement Light Pro Bullet Plus Camera
- AI Road Traffic Parking Detection Pro Bullet Plus Camera



# Parking Management

Make Parking Easy and Smart

- 1**

**ENTRANCE & EXIT MANAGEMENT**
- 2**

**INDOOR PARKING MANAGEMENT**
- 3**

**OUTDOOR PARKING MANAGEMENT**

## Entrance & Exit Management

Leave Safety and Efficiency in Good Hands



### Higher Efficiency, Less Waiting Time

Mileight Supplement Light LPR Camera with Built-in Wiegand Interface + Access Control System = Efficient Entrance & Exit



### Higher Accuracy, Less Misreading

Precisely recognize diverse vehicle attributes such as type, color, etc, and detect no-plate vehicles with high accuracy.



### More Safety, Less Risks

Safety is greatly guaranteed with Mileight intelligent Black/White List Management of license plates, and the non-blind spot Evidence Camera Linkage.



Embedded AI LPR Algorithms, beyond Plate Recognition



Better Image Quality for 24/7 Monitoring with 140dB Super WDR



Simpler Video Management with Mileight Back-end Integration

# Entrance & Exit AI LPR Bullet Camera / Pro Bullet Plus Camera

Smart & Ruggedized Camera for LPR Solution



## Easy and Flexible Deployment

- Standalone Barrier Control with built-in AI LPR algorithms and embedded black/white list
- Milesight Back-end Integration for closed-loop traffic solutions
- Third-party VMS Integration by various CGI/APIs, interfaces and protocols like TCP, HTTP



## Black/White List & No-plate Vehicle Detection

Achieve efficient and accurate access control at any gate.



## Evidence Camera Linkage

Link with any regular cameras to capture the evidence.



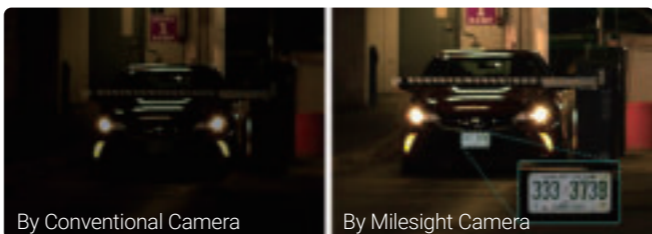
## Intelligent AI-powered LPR Algorithm & LPR Smart Search

Users can easily locate desired videos by searching various features identified by AI LPR, such as type, brand, color, etc.



## Superior Clear Image in Any Environment

140dB Super WDR / Smart IR II Technology / 0.005Lux Ultra Low-light / 60fps High Frame Rate.



## More Highlights

- IP67
- IK10
- SIP / VoIP Supported
- Integrated Junction Box (Optional)

## Other Recommended Models

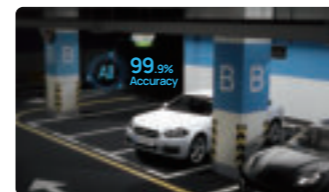
Entrance & Exit Supplement Light AI LPR Pro Bullet Plus Camera

Entrance & Exit AI LPR Pro Dome Camera

Go Far with Milesight Back-end Integration

# Indoor Parking Guidance Camera

Navigating with Light, Parking with Ease



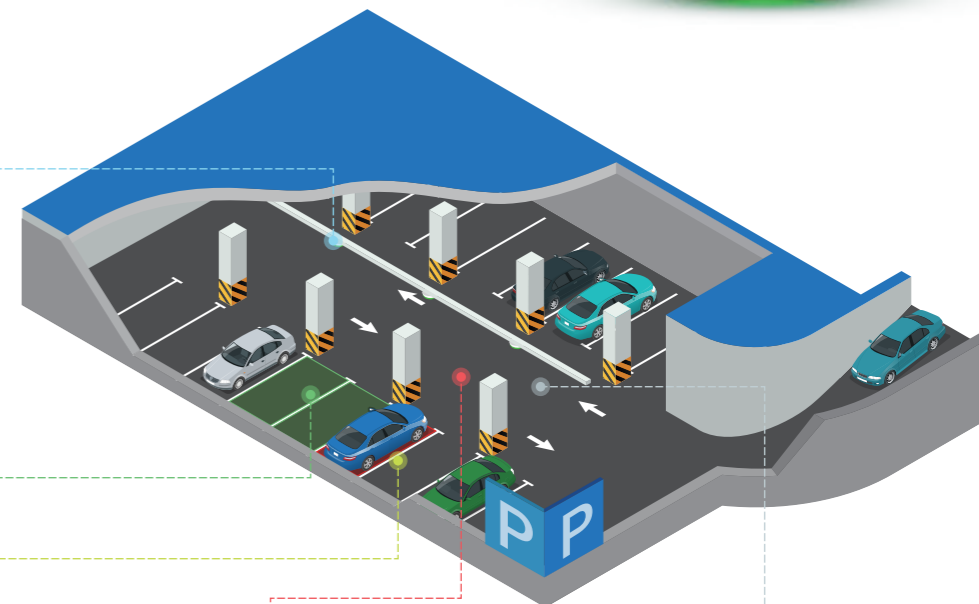
AI Parking Space Occupancy Detection with 99.9% Accuracy



Dual Lens Covering up to 6 Spaces



AI LPR & Vehicle Feature Recognition



Perfect for Indoor & Semi-open Parking Lots

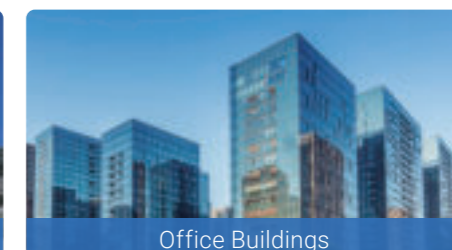
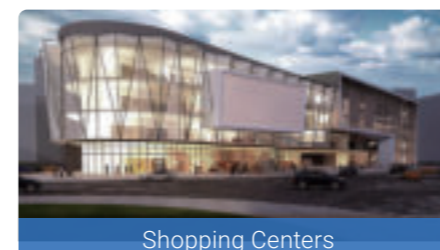


Multi-color Customizable Indicator

## More Highlights

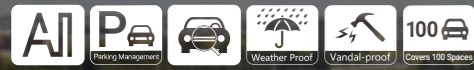
- Audio Output for External Speaker
- CGI APIs Flexible Integration with CGI/APIs
- Daisy-chain for Easy Installation

## Versatile Application Scenarios



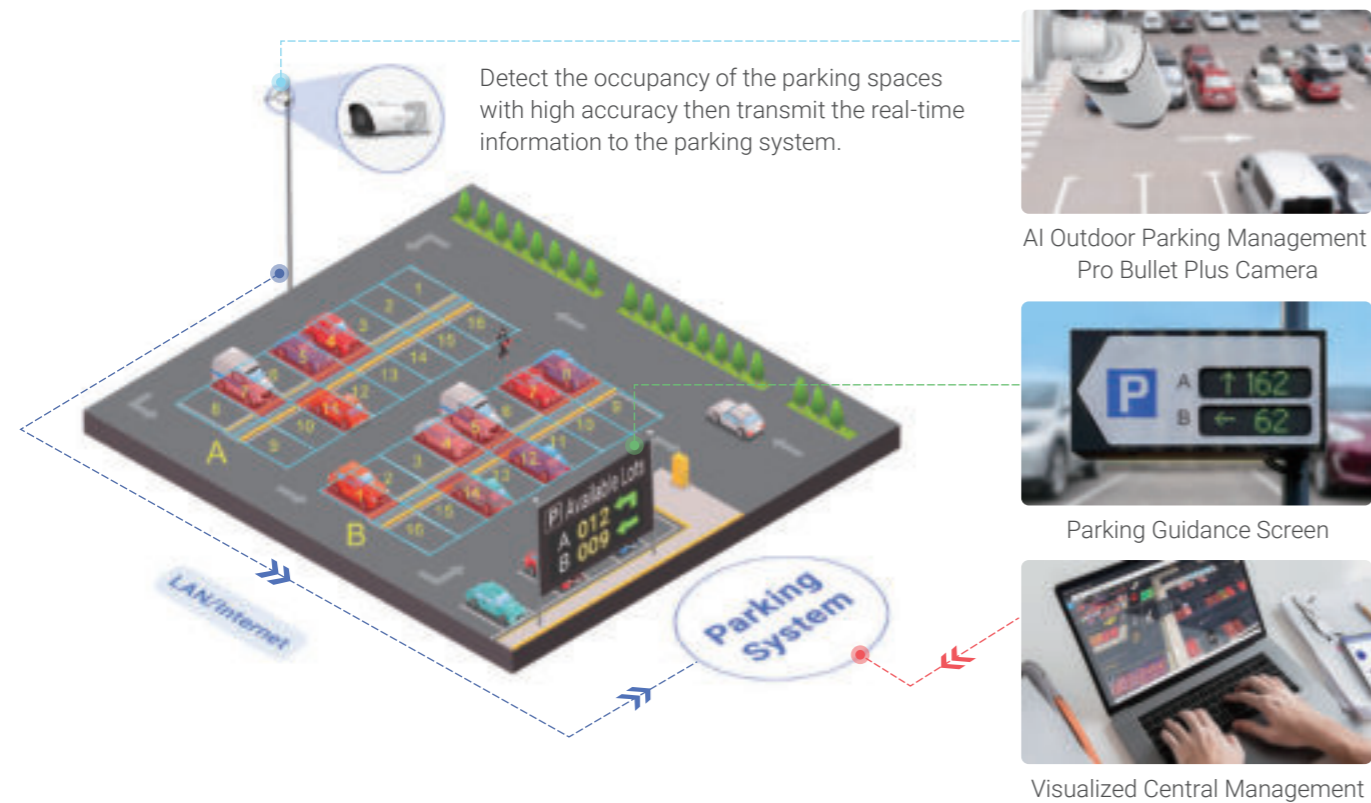
# Outdoor Parking Management

Manage Multiple Parking Spaces Smartly and Efficiently



## Lead the Intelligent Way of Outdoor Parking Management

Milesight's Intelligent Camera-based AI Outdoor Parking Management Solution effectively addresses issues of inefficiency and high costs, improving overall parking mobility.



## Challenges:

**For Operators**

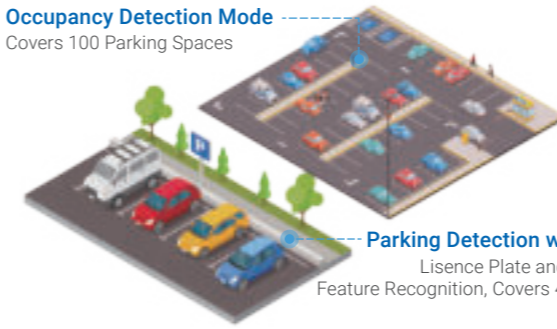
- Low-efficiency management of large car park
- Poor utilization of parking spaces
- Unreliable and costly parking management system
- Losing client loyalty

**For Drivers**

- Waste of time in finding parking spaces
- More fuel consumption and CO2 emission during parking spaces seeking
- A frustrated parking experience caused by traffic congestion

## Solutions:

**Occupancy Detection Mode**  
Covers 100 Parking Spaces



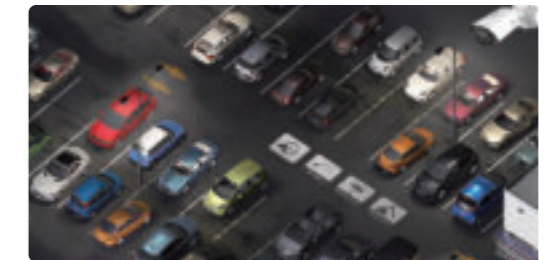
**Parking Detection with LPR**  
License Plate and Vehicle Feature Recognition, Covers 4 Spaces

### 1 Camera 2 Detection Modes

- Flexible Switching Between Occupancy Detection & Occupancy Detection + LPR Mode.
- Up to 100 Parking Spaces in Real-time.
- Smart AI LPR Functions.
- High Precision Occupancy Detection.

### 1 Sharp Eye 24/7 Reliable Detection at Any Time

- Embrace Milesight Parking Image Enhancement Technology, Sony 4K 1.8" STARVIS 2 Sensor.
- Provide 24/7 accurate and reliable detection with sharp details.



### 1 Integrated Solution 100% High Management Efficiency

- Support CGI/APIs to be easily integrated with your existing parking system
- Realize an integrated management solution with real-time parking space occupancy detection and super-high efficient parking guidance.

## More Benefits

**User-oriented Parking Facility Brings 100% Customers' Satisfaction**

**Bring Quick and Joyful Parking Experience for Drivers with Smart Parking Guidance**

**Fuel Saving and Emission Levels Reducing**

## Recommended Model:

**AI Outdoor Parking Management Pro Bullet Plus Camera**

- AI-powered Parking Space Detection Algorithms
- Flexible Switching between Two Detection Modes
- Smart LPR Functions
- >98% Recognition Rate
- 1/1.8" STARVIS 2 Sensor for Better Night View
- Parking Image Enhancement Technology
- 4K Ultra High-Resolution Image Capture
- 3.6~10mm Motorized Lens
- Extensive 3rd Party Compatibility
- IP67&IK10



## TrafficX Series



TrafficX Camera 1



TrafficX Enforcement Camera 2

- 2\*5MP Auto Focus Lenses
- Dual-lens for Overview and ANPR Image
- High-performance AI Chip and AI ISP Embedded
- AI-based Onboard ANPR: Plate Color, Vehicle Type, Vehicle Color, Vehicle Brand,
- No-plate Vehicle Capture, Reverse Driving, Vehicle Attributes Event Detection
- 50m ANPR Distance & 2-3 Lanes Covering
- 99% Capture Rate & 98% Plate Recognition Rate
- 250km/h High Recognizable Speed
- Built-in GPS for Precise Location
- 4G LTE Network for Wireless Transmission (Optional)
- Support 1TB SD Card for Edge Storage
- Support CGI/APIs and TCP/HTTP/MQTT Protocols for Easy Integration

- Multiple Traffic Light Detection Methods
- Red Light Running & Cross Line at Red Light Detection

## Road Traffic Management



### 4G Solar-powered Traffic Sensing Camera



- 2MP
- Radar-Triggered Vehicle Capture
- AI Algorithm for Accurate Focus
- Solar-powered for Constant Use
- 4G LTE for Wireless Data Transmission
- Low Consumption Technology
- 16mm/6mm Optional Lens
- Two-lane (8m wide) Roadway Coverage
- MQTT & HTTP Protocol for Seamless Integration



### AI Road Traffic Pro Bullet Plus Camera



- 2/4/5/8 MP
- 4X/12X Optical Zoom
- 1/1.8" Sensor & 0.005Lux Starlight
- 90fps High Frame Rate
- 140dB Super WDR
- Intelligent AI-powered LPR Algorithm
- Black & White List and No-plate Vehicle Detection
- Reverse Driving Detection
- Specific Lane Management
- Traffic Flow Statistics
- Evidence Camera Linkage

### AI Road Traffic Radar Pro Bullet Plus Camera



- 2/4/5/8 MP
- 4X/12X Optical Zoom
- 1/1.8" Sensor & 0.005Lux Starlight
- 90fps High Frame Rate
- 140dB Super WDR
- Integrated 3D Radar
- Vehicle Speed Detection
- Vehicle Direction Detection
- 200km/h Recognizable Detection
- 90m Radar Detection Range
- Intelligent AI-powered LPR Algorithm
- Black & White List and No-plate Vehicle Detection
- Reverse Driving Detection
- Specific Lane Management
- Traffic Flow Statistics
- Evidence Camera Linkage

### AI Road Traffic Supplement Light Pro Bullet Plus Camera



- 2/4/8 MP
- 4X(8~32mm) AF Lens
- 1/1.8" Sensor & 0.002Lux Starlight
- 90fps High Frame Rate
- 140dB Super WDR
- Integrated Supplement Light
- White LED Light / IR LED Light
- Intelligent AI-powered LPR Algorithm
- Black & White List and No-plate Vehicle Detection
- Reverse Driving Detection
- Specific Lane Management
- Traffic Flow Statistics
- Evidence Camera Linkage
- Versatile Interfaces (Alarm I/O\*2, Audio I/O, DC 12V, RS485, Ethernet Port)

### AI Road Traffic PTZ Bullet Plus Camera



- 2/4/5 MP
- 12X/20X/23X AF Lens
- Flexible Pan, Tilt, and Zoom Tasks
- 1/1.8" Sensor & 0.002Lux Starlight
- 90fps High Frame Rate
- 140dB Super WDR
- Intelligent AI-powered LPR Algorithm
- Black & White List and No-plate Vehicle Detection
- Reverse Driving Detection
- Specific Lane Management
- Traffic Flow Statistics
- Evidence Camera Linkage
- Versatile Interfaces (Alarm I/O\*2, Audio I/O, DC 12V, RS485, PoE)

### AI Road Traffic PTZ Bullet Camera



- 2 MP
- 12X(5.6~64mm) AF Lens
- Flexible Pan, Tilt, and Zoom Tasks
- 90fps High Frame Rate
- Intelligent AI-powered LPR Algorithm
- Black & White List and No-plate Vehicle Detection
- Reverse Driving Detection
- Specific Lane Management
- Traffic Flow Statistics
- Evidence Camera Linkage



### AI Road Traffic Speed Dome Camera



- 4 MP
- 360°Endless Pan & 95° Auto-flip Tilt
- Pan Speed 250°/s, Tilt Speed 160°/s
- 36X(5.7~205.2mm) AF Lens
- 0.002Lux @1/1.8" STARVIS Sensor
- 60fps High Frame Rate
- Intelligent AI-powered LPR Algorithm
- Black & White List and No-plate Vehicle Detection
- Reverse Driving Detection
- Specific Lane Management
- Traffic Flow Statistics
- Evidence Camera Linkage
- Versatile Interfaces (Audio I/O, Alarm In\*4, Alarm Out\*2, AC 24V, PoE)
- Smart Rain-sensing Wiper (Optional)

### AI Road Traffic Parking Detection Pro Bullet Plus Camera



- 8 MP
- Motorized Zoom Lens 3.6~10mm@F1.4
- 1/1.8" Starlight Sensor
- 65m IR Distance
- Parking Violation Detection (Up to 2 Illegal Parking Areas)
- Parking Detection (Up to 4 Parking Spaces)
- Intelligent AI-powered LPR Algorithm
- Up to 98% Recognition Rate
- 3rd Party Compatibility with CGI/APIs/HTTP(s)

# Parking Management



## Indoor Parking Guidance Camera

- 3 MP\*2
- 2.8mm\*2@F1.6
- AI Parking Space Occupancy Detection (≥99.9% High Accuracy)
- Dual Lens Covering up to 6 Spaces
- AI LPR & Vehicle Feature Recognition: License Plate, Plate Color, Vehicle Type, Vehicle Color



- Multi-color Customizable Indicator
- Audio Output for External Speaker
- Flexible Integration with CGI/APIs
- IP65 Rated Robust Performance
- Daisy-chain for Easy Installation



## AI Outdoor Parking Management Pro Bullet Plus Camera

- 8 MP
- 3rd Party Compatibility
- Motorized Zoom Lens 3.6~10mm@F1.4
- 1/1.8" Starlight Sensor
- 65m IR Distance

- [Occupancy Detection](#) (Up to 100 Parking Spaces)
- [Parking Detection with LPR](#) (Up to 4 Parking Spaces)
- Intelligent AI-powered LPR Algorithm
- 98%+ Recognition Rate
- IP67 & IK10 Full Protection



## Entrance & Exit AI LPR Pro Bullet Plus Camera

- 2 MP
- 140dB Super WDR
- Smart IR II Technology
- Intelligent AI-powered LPR Algorithm
- Black & White List and No-plate Vehicle Detection

- Evidence Camera Linkage
- LPR Smart Search
- IP67 & IK10 Full Protection
- Integrated Junction Box



## Entrance & Exit AI LPR Bullet Camera

- 2 MP
- 140dB Super WDR
- Smart IR II Technology
- Intelligent AI-powered LPR Algorithm

- Black & White List and No-plate Vehicle Detection
- Evidence Camera Linkage
- LPR Smart Search
- IP67 & IK10 Full Protection



## Entrance & Exit Supplement Light AI LPR Pro Bullet Plus Camera

- 2 MP
- Motorized 2.7~13.5mm@F1.4
- 60fps High Frame Rate
- 140dB Super WDR
- [Integrated Supplement Light](#)
- [White LED Light / IR LED Light](#)

- [Wiegand Protocol for Access Control System](#)
- Intelligent AI-powered LPR Algorithm
- Black & White List and No-plate Vehicle Detection
- Evidence Camera Linkage
- LPR Smart Search



## Entrance & Exit AI LPR Pro Dome Camera

- 2 MP
- 140dB Super WDR
- Intelligent AI-powered LPR Algorithm
- Black & White List and No-plate Vehicle Detection

- Evidence Camera Linkage
- LPR Smart Search
- Clamshell Design for Easy Installation
- IP67 & IK10 Full Protection